



# hall-0

suspension lamp circle   suspension lamp circle vertical   wall lamp circle

# hall-O

A circle lamp made of powder coated aluminium. The U-shaped profile with the light on the inside gives a beautiful, calm diffuse light to the room. The uniqueness of this collection is the diversity of colors in which these circle lamps can be made. Hall-O allows you to create a design that is tailored to your interior.



wall set on the right  
HA.135.WA.CI.T3.MR &  
HA.70.WA.CI.T3.MO  
hall-O wall lamp circle type 3  
marone 135cm & hall-O wall lamp  
circle type 3 moss 70cm

Type 3 is a special version with a power cable integrated in the wall and externally mounted driver.



HA.135.CI.VT.GM & HA.100.CI.VT.GM  
hall-O suspension lamp circle vertical gunmetal 135cm & 100cm



HA.100.CI.VG, HA.135.CI.VG & HA.170.CI.VG  
hall-O suspension lamp circle verdi grey 100cm, 135cm & 170cm

# hall-O

## suspension lamp circle



HA.100.CI.RR, HA.135.CI.RR & HA.170.CI.RR  
hall-O suspension lamp circle ruby red 100cm, 135cm & 170cm

### colors & materials

\* Add the color/material code you require to the main part number or check our price list for a total part number overview.

Check [www.jaccomarisis.com](http://www.jaccomarisis.com) for the latest colors, materials and details or scan the QR code.



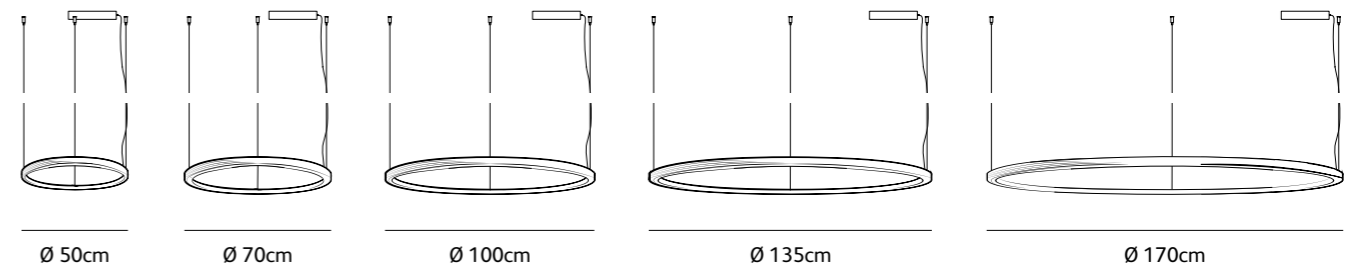
Order code	<b>HA.50.CI.*</b>
Dimensions Ø	<b>50cm</b>
Standard cable length	<b>300cm</b>
Light source	<b>integrated</b> <b>LED 30W / 2700K / 1200 lm</b>
Net. weight	<b>1,2kg</b>
Driver	<b>dimnable driver, dimmer not included</b>

Order code	<b>HA.70.CI.*</b>
Dimensions Ø	<b>70cm</b>
Standard cable length	<b>300cm</b>
Light source	<b>integrated</b> <b>LED 42W / 2700K / 1700 lm</b>
Net. weight	<b>1,7kg</b>
Driver	<b>dimnable driver, dimmer not included</b>

Order code	<b>HA.100.CI.*</b>
Dimensions Ø	<b>100cm</b>
Standard cable length	<b>300cm</b>
Light source	<b>integrated</b> <b>LED 60W / 2700K / 2400 lm</b>
Net. weight	<b>2,4kg</b>
Driver	<b>dimnable driver, dimmer not included</b>

Order code	<b>HA.135.CI.*</b>
Dimensions Ø	<b>135cm</b>
Standard cable length	<b>300cm</b>
Light source	<b>integrated</b> <b>LED 80W / 2700K / 3250 lm</b>
Net. weight	<b>3,3kg</b>
Driver	<b>dimnable driver, dimmer not included</b>

Order code	<b>HA.170.CI.*</b>
Dimensions Ø	<b>170cm</b>
Standard cable length	<b>300cm</b>
Light source	<b>integrated</b> <b>LED 103W / 2700K / 4000 lm</b>
Net. weight	<b>4,1kg</b>
Driver	<b>dimnable driver, dimmer not included</b>



IP 20

# hall-O

suspension lamp circle vertical



HA.100.CI.VT.GM & HA.135.CI.VT.GM  
hall-O suspension lamp circle vertical gunmetal 100cm & 135cm

Order code	HA.50.CI.VT.*
Dimensions Ø	50cm
Standard cable length	300cm
Light source	integrated LED 30W / 2700K / 1200 lm
Net. weight	1,2kg
Driver	dimnable driver, dimmer included

Order code	HA.70.CI.VT.*
Dimensions Ø	70cm
Standard cable length	300cm
Light source	integrated LED 42W / 2700K / 1700 lm
Net. weight	1,7kg
Driver	dimnable driver, dimmer not included

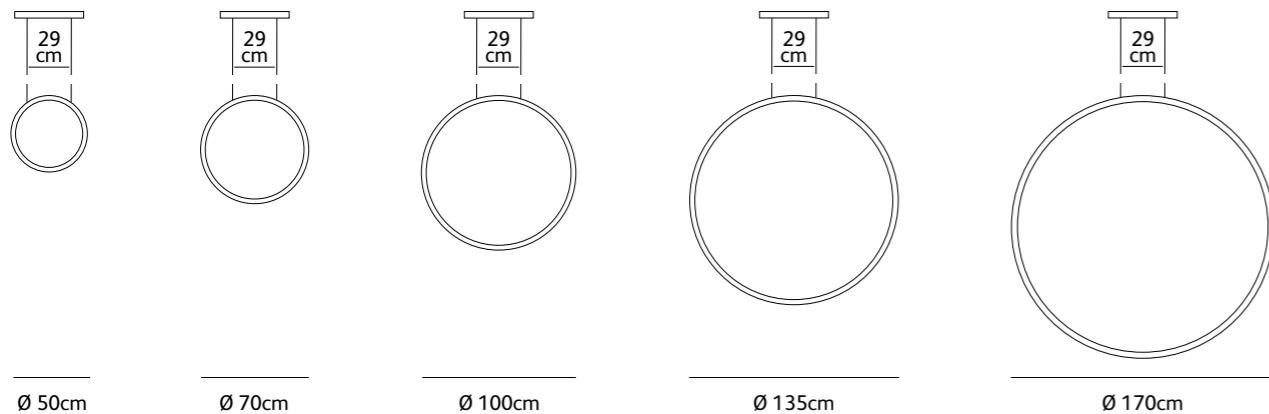
Order code	HA.100.CI.VT.*
Dimensions Ø	100cm
Standard cable length	300cm
Light source	integrated LED 60W / 2700K / 2400 lm
Net. weight	2,4kg
Driver	dimnable driver, dimmer not included

Order code	HA.135.CI.VT.*
Dimensions Ø	135cm
Standard cable length	300cm
Light source	integrated LED 80W / 2700K / 3250 lm
Net. weight	3,3kg
Driver	dimnable driver, dimmer not included

Order code	HA.170.CI.VT.*
Dimensions Ø	170cm
Standard cable length	300cm
Light source	integrated LED 103W / 2700K / 4000 lm
Net. weight	4,1kg
Driver	dimnable driver, dimmer not included

## colors & materials

\* Add the color/material code you require to the main part number or check our price list for a total part number overview.  
Check [www.jaccomar.com](http://www.jaccomar.com) for the latest colors, materials and details or scan the QR code.



IP 20

# hall-O

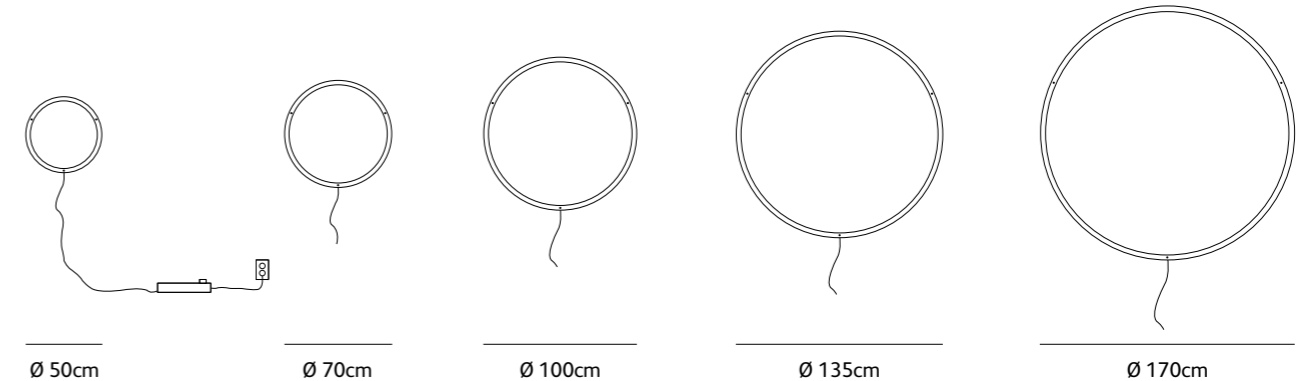
wall lamp circle type 2



HA.135.WA.CI.T3.MR & HA.70.WA.CI.T2.MO  
hall-O wall lamp circle type 3 marone 135cm & hall-O wall lamp circle type 2 moss 70cm  
Type 3 is a special version with a power cable integrated in the wall and externally mounted driver. Hall-O wall lamp circle type 2 is the standard version with natural rope cord and floor dimmer.

## colors & materials

\* Add the color/material code you require to the main part number or check our price list for a total part number overview.  
Check [www.jaccomar.com](http://www.jaccomar.com) for the latest colors, materials and details or scan the QR code.



IP 20

Order code	HA.50.WA.CI.T2.*
Dimensions Ø	50cm
Standard cable length	300cm
Light source	integrated LED 30W / 2700K / 1200 lm
Net. weight	1,2kg
Driver	dimnable driver, floor dimmer included

Order code	HA.70.WA.CI.T2.*
Dimensions Ø	70cm
Standard cable length	300cm
Light source	integrated LED 42W / 2700K / 1700 lm
Net. weight	1,7kg
Driver	dimnable driver, floor dimmer included

Order code	HA.100.WA.CI.T2.*
Dimensions Ø	100cm
Standard cable length	300cm
Light source	integrated LED 60W / 2700K / 2400 lm
Net. weight	2,4kg
Driver	dimnable driver, floor dimmer included

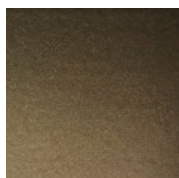
Order code	HA.135.WA.CI.T2.*
Dimensions Ø	135cm
Standard cable length	300cm
Light source	integrated LED 80W / 2700K / 3250 lm
Net. weight	3,3kg
Driver	dimnable driver, floor dimmer included

Order code	HA.170.WA.CI.T2.*
Dimensions Ø	170cm
Standard cable length	300cm
Light source	integrated LED 103W / 2700K / 4000 lm
Net. weight	4,1kg
Driver	dimnable driver, floor dimmer included

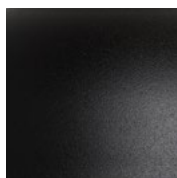
# hall-O

colors and materials

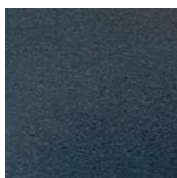
suspension lamp circle, suspension lamp circle vertical & wall lamp circle



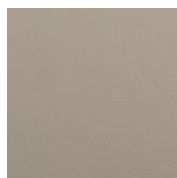
\* AN anodic  
brown



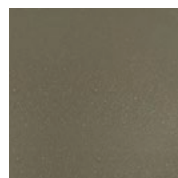
\* BL black



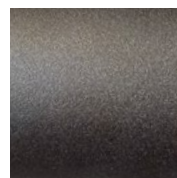
\* GM gunmetal



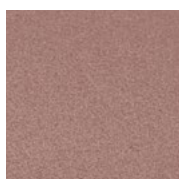
\* LA latte



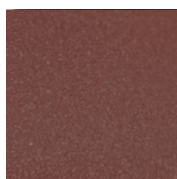
\* MO moss



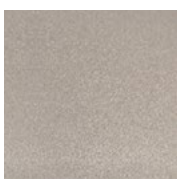
\* MR marone



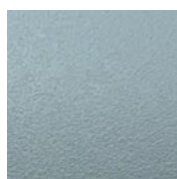
\* NA navajo



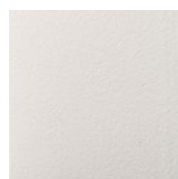
\* RR ruby red



\* SA sand



\* VG verdi grey



\* WH white